



# CYP4F2 Polyclonal Antibody

<b>Catalog No</b>	YP-Ab-02602
<b>Isotype</b>	IgG
<b>Reactivity</b>	Human;Rat;Mouse;
<b>Applications</b>	WB;IHC;IF;ELISA
<b>Gene Name</b>	CYP4F2
<b>Protein Name</b>	Leukotriene-B(4) omega-hydroxylase 1
<b>Immunogen</b>	The antiserum was produced against synthesized peptide derived from human CYP4F2. AA range:41-90
<b>Specificity</b>	CYP4F2 Polyclonal Antibody detects endogenous levels of CYP4F2 protein.
<b>Formulation</b>	Liquid in PBS containing 50% glycerol, 0.5% BSA and 0.02% sodium azide.
<b>Source</b>	Polyclonal, Rabbit,IgG
<b>Purification</b>	The antibody was affinity-purified from rabbit antiserum by affinity-chromatography using epitope-specific immunogen.
<b>Dilution</b>	WB: 1/500 - 1/2000. IHC: 1/100 - 1/300. ELISA: 1/40000.. IF 1:50-200
<b>Concentration</b>	1 mg/ml
<b>Purity</b>	≥90%
<b>Storage Stability</b>	-20°C/1 year
<b>Synonyms</b>	CYP4F2; Leukotriene-B(4) omega-hydroxylase 1; CYP1VF2; Cytochrome P450 4F2; Cytochrome P450-LTB-omega; Leukotriene-B(4) 20-monooxygenase 1
<b>Observed Band</b>	60kD
<b>Cell Pathway</b>	Microsome membrane ; Peripheral membrane protein . Endoplasmic reticulum membrane ; Peripheral membrane protein .
<b>Tissue Specificity</b>	Liver. Also present in kidney: specifically expressed in the S2 and S3 segments of proximal tubules in cortex and outer medulla (PubMed:10660572).
<b>Function</b>	catalytic activity:(6Z,8E,10E,14Z)-(5S,12R)-5,12-dihydroxyicosa-6,8,10,14-tetraenoate + NADPH + O(2) = (6Z,8E,10E,14Z)-(5S,12R)-5,12,20-trihydroxyicosa-6,8,10,14-tetraenoate + NADP(+) + H(2)O.,cofactor:Heme group.,function:Cytochromes P450 are a group of heme-thiolate monooxygenases. In liver microsomes, this enzyme is involved in an NADPH-dependent electron transport pathway. It oxidizes a variety of structurally unrelated compounds, including steroids, fatty acids, and xenobiotics.,similarity:Belongs to the cytochrome P450 family.,tissue specificity:Liver.,
<b>Background</b>	This gene encodes a member of the cytochrome P450 superfamily of enzymes. The cytochrome P450 proteins are monooxygenases which catalyze many reactions involved in drug metabolism and synthesis of cholesterol, steroids and



other lipids. This protein localizes to the endoplasmic reticulum. The enzyme starts the process of inactivating and degrading leukotriene B4, a potent mediator of inflammation. This gene is part of a cluster of cytochrome P450 genes on chromosome 19. Another member of this family, CYP4F11, is approximately 16 kb away. [provided by RefSeq, Jul 2008],

**matters needing attention**

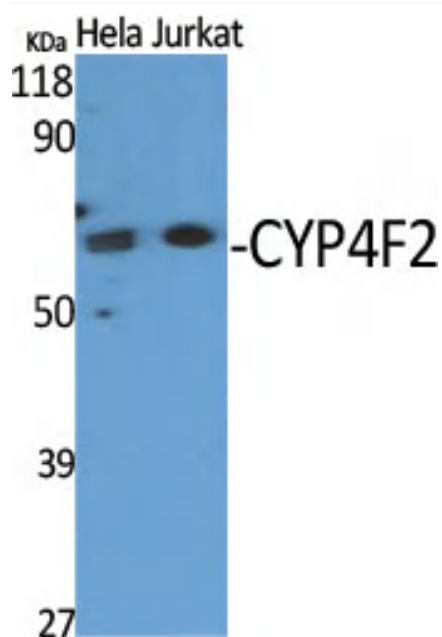
Avoid repeated freezing and thawing!

**Usage suggestions**

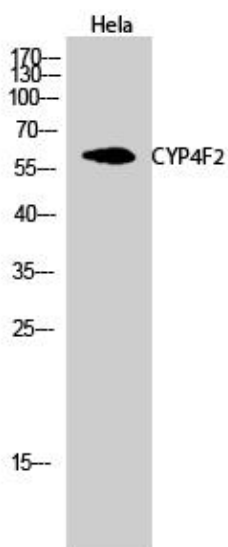
This product can be used in immunological reaction related experiments. For more information, please consult technical personnel.



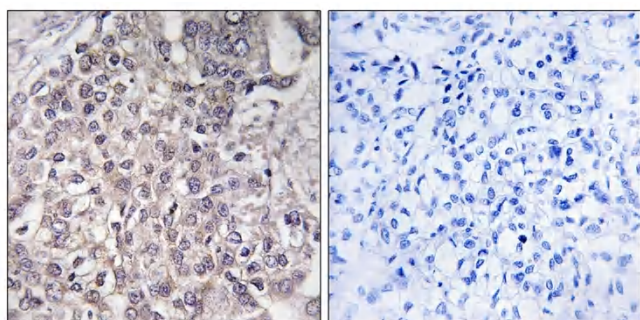
## Products Images



Western Blot analysis of various cells using CYP4F2 Polyclonal Antibody



Western Blot analysis of HeLa cells using CYP4F2 Polyclonal Antibody



Immunohistochemistry analysis of paraffin-embedded human liver carcinoma, using Cytochrome P450 4F2 Antibody. The picture on the right is blocked with the synthesized peptide.